

PERMIN

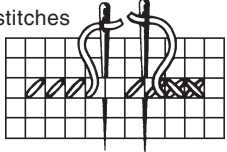
Scandinavian art needlework





Work with split yarn = 2 strands

-  726. YELLOW
-  3825. ORANGE
-  368. GREEN
-  340. LIGHT LILAC
-  3807. BLUEISH LILAC
-  3024. LIGHT GREY
-  647. GREY
-  844. DARK GREY

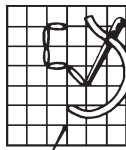
Cross stitches



For this design please use
Permin aida fabric. Item no.
357 in colour 22 (357/22)
Cut size: 9 x 11 cm

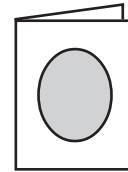
1  = 1  in the fabric
Count the design from centre of fabric

Back stiches

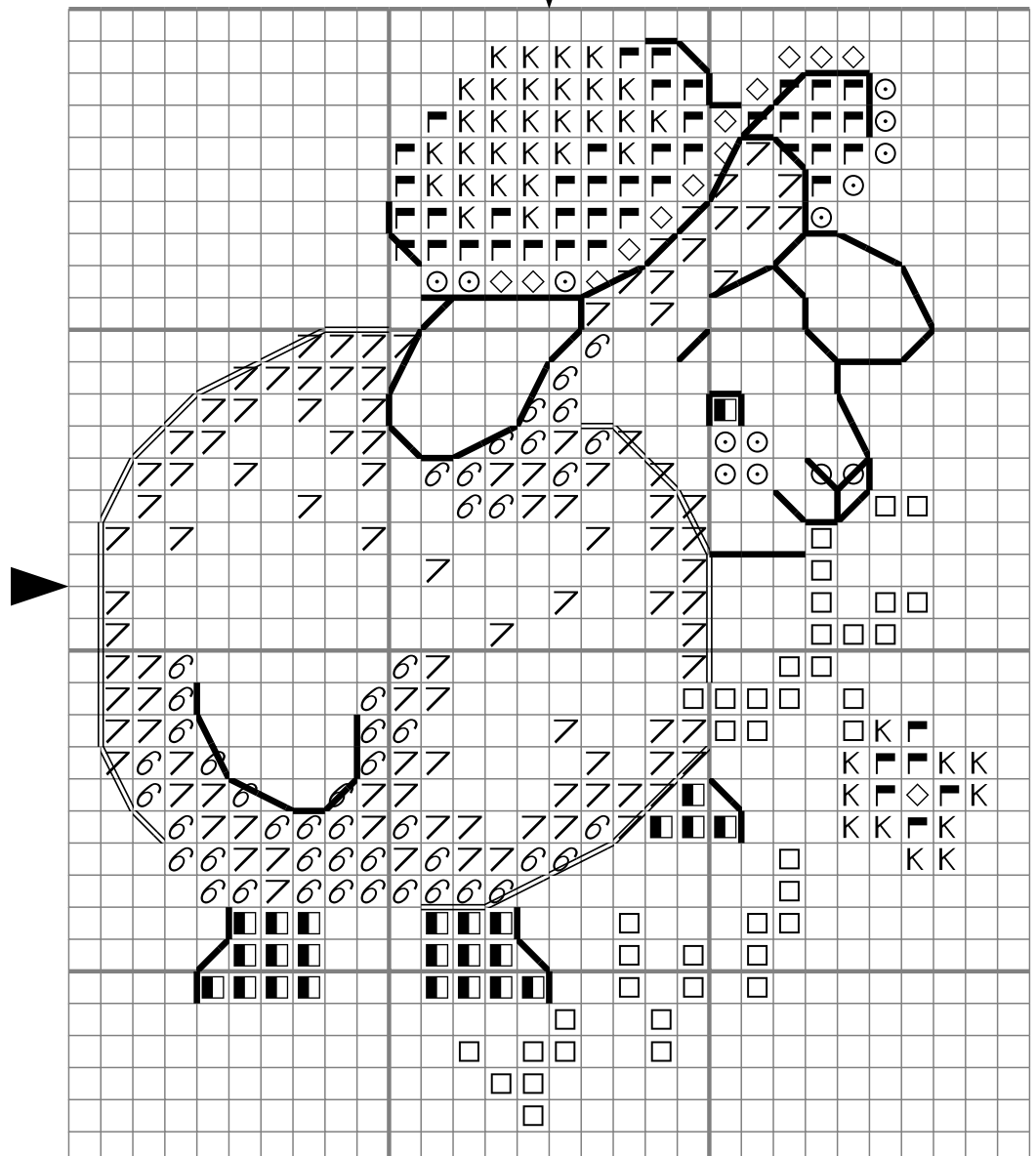


Work with split yarn = 1 strand

-  647.
-  844.



CARD & ENVELOPE NO. 5875/22



DMC
117



Made in Denmark©